

2019 | **SOUTHWIND**
CLASS A GAS



LASTING DEPENDABILITY | FAMILY FAVORITE | FEATURE PACKED

 **FLEETWOOD RV**

www.fleetwoodrv.com



SOUTHWIND 35K
Shown in Quartz

RIDE LIKE THE WIND

What's the best thing about RV travel? Choice. That's why the all-new 2019 Southwind is Fleetwood's answer to the age-old question, "Where to next?" With two new floorplans giving you five luxurious options, you can travel just the way you like, whether that's more time inside at the automotive inspired cockpit with dual monitors or outdoors under the legless power patio awning—right next to your 40" exterior TV. Taking your choices even further, you can always opt for the Technology Package that gives this Class A Gas a 160-watt solar panel, the Kenwood® collision avoidance system, an upgraded Kenwood® stereo, and more. The choice is yours.

YOU WANT EVERY SINGLE ADVANTAGE WHEN IT COMES TO YOUR RV.

At REV, we don't settle for anything less than the best, and neither should you. That's why every Fleetwood RV motorhome features industry-leading materials and construction. With these REV brands, you'll also find the ultimate in RV convenience and strength, like our auto hydraulic leveling system, Vacu-Bond™ construction, Dryseal™ edge coating, and much more – all coming standard to elevate your travels.

Each of these advantages have been engineered to deliver superior reliability, durability, and most of all, customer satisfaction.

1. Power Platform™ (Gas Motorhomes)

Designed to deliver the best in storage, strength, balance and control, the exclusive Power Platform provides a significant enhancement to the Ford® drivetrain. The Power Platform allows for each floorplan in the Southwind to have the most pass through storage bays, the highest tank capacities and the largest slide rooms.

2. Auto Hydraulic Leveling System

More reliable than electric leveling jacks, our automatic hydraulic leveling system is reliable, durable and easy to use. The operating procedure is clean and easy, the results are smooth, simple leveling at the push of a button.

3. Powerlock System™ (Interlocking Floors, Walls, and Ceiling)

REV's interlocking aluminum extrusion wall-joint system integrates floor, sidewall, and roof assembly into one locked-together overall structure for long-term performance and durability.

4. Powerframe System™ (Precision-Welded Aluminum Walls, Floor, and Roof Structures)

Our wall, floor, and roof frames are designed and engineered to fit precisely with interlocking extrusions on the steel-reinforced bridge structure. No "hammer-it-to-fit" stick and frame construction here.

5. Vacu-Bond™ Construction

Vacuum-bonded assemblies combine industry-leading materials and construction for a straight and flat integrated wall that's better suited to the rigors of the road. It applies up to 415,000-pounds of vacuum pressure to our already strong welded-aluminum sidewall frame, bead-foam panel insulation, Tuff-Coat fiberglass skin, and inner wall materials for over 30 minutes – far exceeding industry standards.

6. Solid Bead-Foam Engineered Fit Insulation™

In some RVs, you may find air holes in the insulation. Not in a REV RV. Using exact measurements, bead-foam is placed between every structural support to eliminate any gaps and provide insulation from both exterior temperature and noise.



Five Layer Wall

Our Vacu-Bond™ walls feature an adhesive bonding process that applies up to 415,000-pounds of vacuum pressure to the welded-aluminum sidewall frame, bead-foam panel insulation, and Tuff-Coat fiberglass skin for more than 30 minutes – far exceeding industry standards.



Weld Joint

Every joint found in the frame of your Fleetwood motorhome has been welded by a certified welder to add strength to the frame, unlike the stick and nail construction found on other RVs.



Ceiling Interlock

You won't find stick and frame construction here. Our exclusive extruded aluminum allows the ceiling to "lock" with the wall structure, creating one solid aluminum assembly.

7. Dryseal™ Edge Coating

This water-wicking coating is applied to every edge of the walls and windows for long-lasting durability. It helps to seal out moisture, prevent delamination, swelling, and mold.

8. Tuff-Coat Fiberglass Walls

REV RV seeks to use the highest quality exterior fiberglass on our Class A gas and Class A diesel products. The impressive tuff-coat fiberglass skin is extremely weather resistant and UV resistant. Most importantly, there is no wood substrate on the exterior of the REV Class A products. Delamination is a major concern for manufacturers using the composite or wood backer in their walls. Not at REV RV, our exterior skin has no composite and no wood, just the fiberglass.

9. Tuff-Ply Engineered Vinyl Roofing

As the name implies, this "Tuff-Ply" or Thermoplastic Poly Olefin is as tough as it comes and is very low maintenance. Tuff-Ply is flexible, pliable and easily conforms with the roofline radius with little to no stress at the awning rail connection seam. Tuff-Ply is a clean, non-streaking, non-chalking engineered vinyl material that is easy to maintain.

10. Tuff-PEX™ Plumbing System

It's a complete system of flexible, yet durable, Oetiker tubing, fittings, and stainless-steel rings – all with sub-zero ratings. Colors of red for hot and blue for cold make servicing simple.

11. Tapered Slideout Box Tops

Our slideouts include a tapered roofline that directs water away from the RV to provide an additional level of moisture protection. There are also multiple bead-seals, as well as our debris awning protection.

12. Seamless Metallic Slide Room Underbelly

What's underneath is just as important as what's on top. Our metallic slide bottom goes above the standard wood bottom for protection against the elements, and adds yet another level of durability.

13. Roto-Cast Molded Luggage Bays

Instead of the industry-standard plywood, these molded bays are more durable, look great, and can be washed with a hose.

14. Dedicated Full-Length Metallic A/C Ducting

Instead of cut-out foam channels, REV provides insulated A/C ducting that runs the entire length of your motorhome with carefully placed outlets in the most occupied places to assure cool comfort.

15. Sure-Glide Flush Floor Aluminum Slide Transition Ramp

Pinewood ramps that absorb moisture, crack and rot are the industry standard. Not here! Our aluminum ramps will stay straight, extend and retract easily, and will provide you with years of trouble-free operation.

16. Automotive Inspired Bonded Windshield

REV RV's bonded windshields surpass the standard "floating" windshield in durability. The entire perimeter of glass is bonded to a frame that provides more support and is much more conducive to the demands of the road.

17. Bus-Style Cargo Doors

We far exceed the industry standards of exposed seals and hinges with a more durable design taken from our luxury motorcoaches.

18. Premium Full-Body Paint

Just like the cars, trucks, motorcycles and most any other automotive product produced today, our motorhomes receive the same premium painted protection on the exterior. Unlike the cars of today, our motorhomes are typically more than just one color. The REV RV family of painted motorhomes receive up to four different colors and as many as two separate coats of clear. Our REV RV family of Class A motorhomes are painted and clear coat protected in a state-of-the-art facility located right on the REV manufacturing campus. The results are easy to see...Better protection, better looks, and higher resale value after years of enjoyment.

19. Radiused and Cambered Entry Door

The industry standard square corner door allows for too much wind noise. So, we use a higher-end solution that fits your motorcoach's body better, latches more securely, and seals tighter.

20. Hide-A-Loft™ Overhead Bed System

A REV RV exclusive, our Hide-A-Loft™ Bed System offers a capacity of up to 500 lbs. The bed includes a queen mattress and is incredibly comfortable and easy to operate.

21. Dealer Partnership

REV's dealer relationship goes beyond the expected. We listen to our dealers and are able to provide you with a motorhome you can be proud to own and that fits your needs. This partnership allows the dealer to be a bridge between the customer and REV Group.

Build your own Southwind at <https://www.fleetwoodrv.com/build-your-own>





Your travels may take you far, but always by your side, providing all the comfort, convenience and style you desire, is Southwind. No matter where you roam, Southwind will call you home.

3

4

SOUTHWIND 35K
Shown In Sierra

FLEETWOOD RV
www.fleetwoodrv.com





Seek the road to freedom in this Southwind equipped with an abundance of storage, quality amenities and plenty of comfort for a party of two or a family with kids.

5

6

SOUTHWIND 35K
Shown in Parchment decor
with Cappuccino cabinetry



7

SOUTHWIND 37F
Shown in Peppercorn decor
with Greystone cabinetry



8



SOUTHWIND 35K
Shown in Parchment decor
with Cappuccino cabinetry

SOUTHWIND 35K
Shown in Parchment decor
with Cappuccino cabinetry



9



10



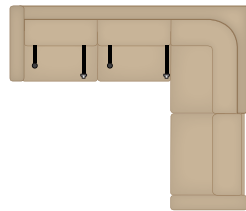
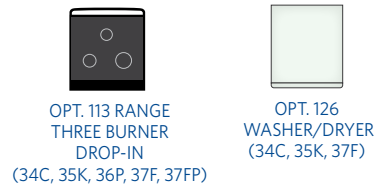
TOP SELLING FEATURES

- Two New Southwind floorplans
- Luxury Gas Class A motorhome
- Illumaplex® electronics house electronics system
- Legless power patio awning
- Automotive inspired cockpit with dual monitors
- Hide-A-Loft™ drop down queen bed (500lb capacity)
- Residential refrigerator w/2000W Pure Sine inverter
- 22K - 26K chassis offerings (F/P dependent)
- Chrome exterior appointments
- Electric power cord reel



FLOORPLANS

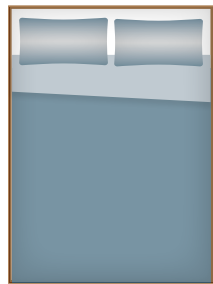
AVAILABLE OPTIONS



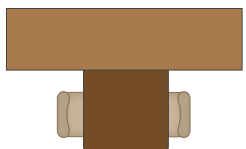
OPT. 191 EXPANDABLE L-SOFA (34C, 35K)



OPT. 194 THEATRE SEATING (34C, 35K, 37F, 37FP)



OPT. 220 HIDE-A-LOFT™ DROP DOWN QUEEN BED

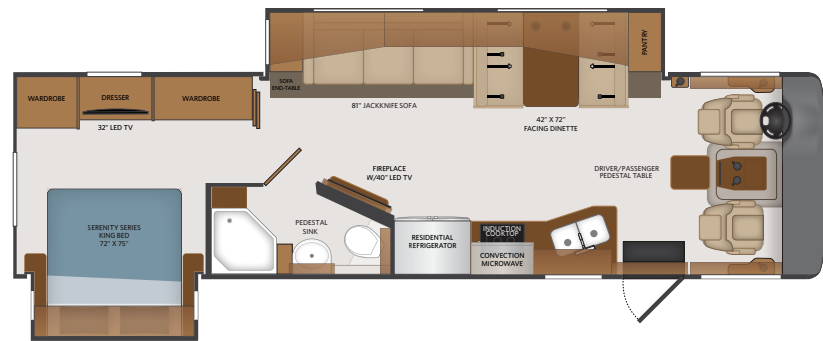


OPT. 833 FREE STANDING DINETTE w/CREDENZA (34C, 35K, 36P)

048	EXTERIOR STAINLESS ACCENT PACKAGE
099	SATELLITE DELETE
113	RANGE - THREE BURNER DROP-IN (34C, 35K, 36P, 37F)
126	WASHER/DRYER (34C, 35K, 37F)
147	PREMIUM STEREO UPGRADE
191	EXPANDABLE L-SOFA (34C, 35K)
194	THEATRE SEATING (34C, 35K, 37F, 37FP)
208	L-SOFA & FREE STANDING DINETTE w/CREDENZA (36P: OPT 191 & 833)
220	HIDE-A-LOFT™ DROP DOWN QUEEN BED
333	7.0KW GENERATOR
435	CSA-PKG FORD®
447	CSA FORD® INSTRUMENT PANEL
563	TECHNOLOGY PACKAGE
833	FREE STANDING DINETTE w/CREDENZA (34C, 35K, 36P)

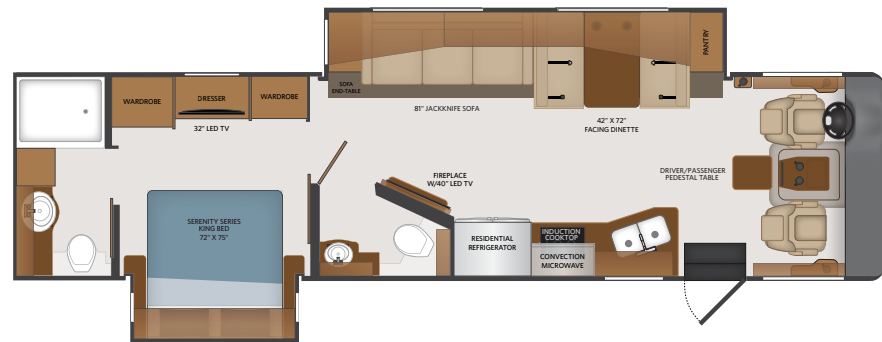
34C

Options: 048, 099, 113, 126, 147, 191, 194, 220, 333, 435, 447, 563, 833



35K

Options: 048, 099, 113, 126, 147, 191, 194, 220, 333, 435, 447, 563, 833



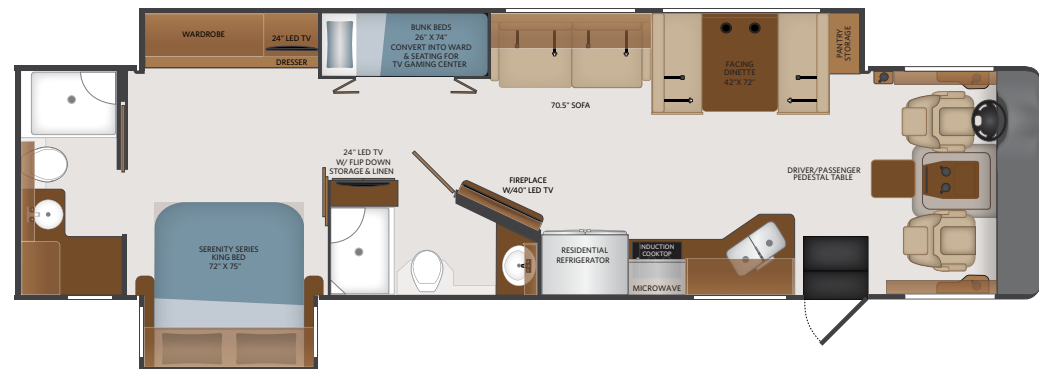
36P

Options: 048, 099, 113, 147, 208, 220, 333, 435, 447, 563, 833



37F

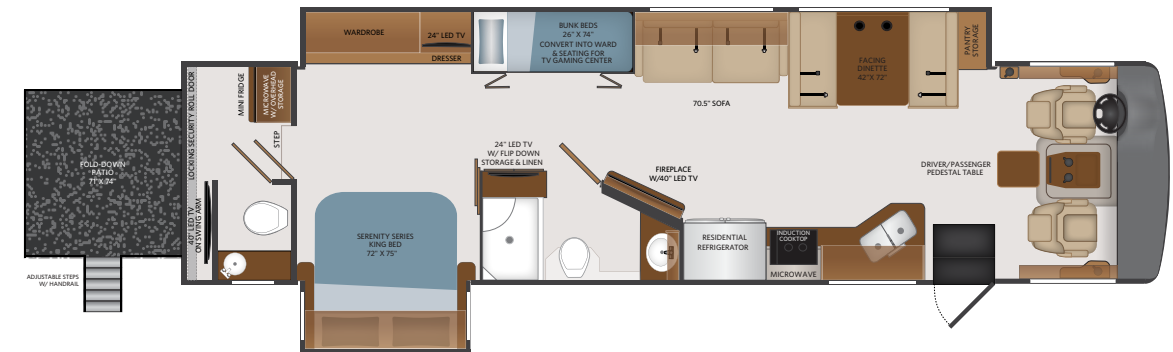
Options: 048, 099, 113, 126, 147, 194, 220, 333, 435, 447, 563



37FP

Options: 048, 099, 113, 147, 194, 220, 333, 435, 447, 563

Extend your living space with the all-new Extended Living Edition floorplan. The snap-in patio system features a powder coat finish, a protective roll-down door, and sturdy, adjustable MORryde patio steps that snap firmly into place and adjust to difficult terrain. Each of these elements have been designed to give travelers an extended living space that's as easy to setup as 1-2-3.



CHASSIS

MODEL	34C	35K	36P	37F	37FP
Wheelbase (inches)	208"	228"	252"	242"	242"
Front GAWR (lbs) ²	8,000	8,000	9,000	9,000	9,000
Rear GAWR (lbs) ³	15,000	15,000	15,500	15,500	17,500
GCWR (lbs) ³	26,000	26,000	30,000	30,000	30,000
GVWR (lbs) ¹	22,000	22,000	24,000	24,000	26,000
Hitch Rating Weight (lbs) ¹	5,000	5,000	5,000	8,000	8,000
Tongue Weight (lbs) ⁴	500	500	500	800	800
Fuel Capacity (gal)	80	80	80	80	80

DIMENSIONS AND CAPACITIES

MODEL	34C	35K	36P	37F	37FP
Overall Length (inches) ⁴	34' 3"	36' 3"	36' 3"	38' 9"	39' 1"
Overall Height (with A/C)	12' 10"	12' 10"	12' 10"	12' 10"	12' 10"
Overall Width (maximum) ^{5,6}	102"	102"	102"	102"	102"
Interior Height (maximum)	84"	84"	84"	84"	84"
Interior Width (maximum)	96"	96"	96"	96"	96"
Patio Awning Width (feet & inches)	18'	18'	15'	18'	18'
Interior Storage (cu. ft.)	123	126	144	171	171
Exterior Storage (cu. ft.)	160	180	138	170	170
Fresh Water Holding Tank (gal)	100	100	100	100	100
Grey Water Holding Tank (gal)	58	58	46	90	90
Black Water Holding Tank (gal)	42	42	30	50	50
Appliance Propane (gal) (WC)	25	25	25	25	25
Water Heater (gal)	10	10	10	N/A	N/A

FORD® CHASSIS

Model: FORD®
 Engine: 6.8L Triton V10
 Transmission: Ford® 6-Speed, Automatic w/Overdrive

Alternator: 175 Amp
 Torque: 460 lb.-ft. @ 3,000 RPM
 Horsepower: 320 HP @ 3,900 RPM

EXTERIOR CHOICES



IMPERIAL



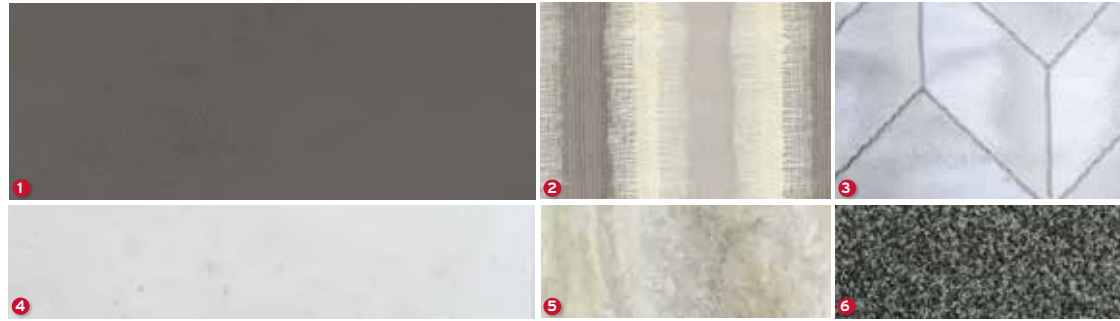
SIENNA



QUARTZ

INTERIOR DECOR CHOICES

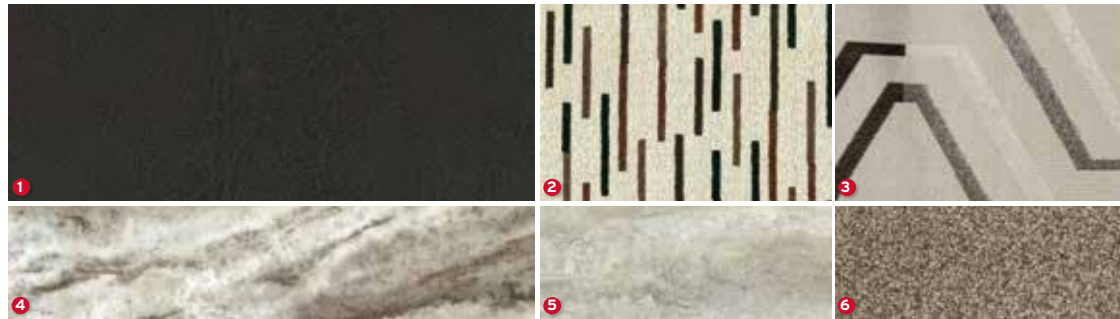
PEPPERCORN



PARCHMENT



SABLE



- 1 SOFA
- 2 LIVING ACCENT
- 3 BEDSPREAD
- 4 COUNTERTOP
- 5 FLOORING
- 6 CARPET

DESIGNER RECOMMENDS THE FOLLOWING INTERIOR AND EXTERIOR COMBINATIONS

Parchment Décor	+	Cappuccino Cabinetry	+	Sienna Graphics
Peppercorn Décor	+	Greystone Cabinetry	+	Imperial Graphics
Sable Décor	+	Cappuccino Cabinetry	+	Quartz Graphics

	34C	35K	36P	37F	37FP
Aerodynamic Fiberglass Cap w/Automotive Headlighting	S	S	S	S	S
Rear Fiberglass Cap w/Automotive Lighting	S	S	S	S	S
ABS Wheel Well Skirts	S	S	S	S	S
TPO Roof - Thermoplastic Polyolefin	S	S	S	S	S
Legless Electric Patio Awning w/LED Lighting & Wind Sensor Retract	S	S	S	S	S
Slideout Awning Toppers	S	S	S	S	S
Radiused Entry Door w/Screendoor, Latch, Deadbolt Lock	S	S	S	S	S
Chrome Luggage Door Handles	S	S	S	S	S
Entry Grab Handle - Acrylic Lighted	S	S	S	S	S
Exterior Power Entry Step w/Light	S	S	S	S	S
Side Swing Aluminum Bus-Style Luggage Doors	S	S	S	S	S
Dual Pane Frameless Windows	S	S	S	S	S
LED Patio Light	S	S	S	S	S
Front/Sid/Rear Clearance/Marker Lighting	S	S	S	S	S
Auto Gen Start	S	S	S	S	S
Gravity Fresh Water Fill	S	S	S	S	S
Exterior Service Station - Water Pump Switch, Exterior Shower, Black Tank Flush, City Water Hookup & Drainage Valves	S	S	S	S	S
Exterior Park Cable & Satellite Hookup	S	S	S	S	S
Trailer Hitch w/7-Way Round Tow Connection (lbs.)	5,000	5,000	5,000	8,000	8,000
TV Antenna - Unidirectional King Controls Jack Antenna	S	S	S	S	S
Exterior LP Connection	S	S	S	S	S
Four-Point Fully Automatic Hydraulic Leveling Jacks	S	S	S	S	S
Rear Ladder	S	S	S	S	S
Roof Vent Rain Covers	S	S	S	S	S
Auto-Locating Stationary Satellite System w/Dish Receiver(s) - King	S	S	S	S	S
Undercarriage Lighting	S	S	S	S	S
Rear Cap & Luggage Door SS Accents	0	0	0	0	0
Automotive One-Piece Windshield	S	S	S	S	S
Daytime Running Lights	S	S	S	S	S
Tinted Slider Driver/Passenger Windows	S	S	S	S	S
Fog Lamps	S	S	S	S	S
Automotive Style Windshield Wiper System	S	S	S	S	S
Six Gallon Water Heater	S	S	S	NA	NA
Tankless Water Heter	NA	NA	NA	S	S
Remote Power/Heated Mirrors w/ Turn Signals/Side Cameras - Chrome	S	S	S	S	S
Driver Chair w/Reclining Back, Swivel & Six-way Power Controls	S	S	S	S	S
Passenger Chair w/Manual Footrest, Reclining Back & Swivel	S	S	S	S	S
Driver/Passenger Wood Color Match Armrests	S	S	S	S	S
Driver/Passenger Cupholders	S	S	S	S	S
Power Windshield Roller Shade	S	S	S	S	S
Driver/Passenger Window Manual Roller Shades	S	S	S	S	S
Driver/Passenger Overhead Map Lighting	S	S	S	S	S
Black Instrument Gauges w/Electronic Information Center	S	S	S	S	S
High-Output Dash Air Conditioning/Heat	S	S	S	S	S
Electronic Cruise Control	S	S	S	S	S
Windshield Wipers w/Delay	S	S	S	S	S
Remote Switch for Power/Heated Mirrors	S	S	S	S	S
Steering Wheel w/Tilt Column	S	S	S	S	S
Color Monitor for Side & Rear Cameras - 6"	S	S	S	S	S
Pioneer® Touch Screen Radio 6.2" w/AM/FM/CD/DVD/Bluetooth/MP3/USB - Remote Control - Phone Control - Siri Eyes Free - Navigation Ready - Sirius/XM Ready (Requires Subscription)	S	S	S	S	S
Kenwood 6.95" Motorized Tilt Touch Screen Radio w/AM/FM/CD/DVD/Bluetooth/MP3/USB - Remote Control - Phone Control - Siri Eyes Free - Android Auto & Apple Car Play w/Navigation - Android Rapid Charge - Built in HD Radio - Wireless Music Browsing - Pandora - Spotify - Sirius/XM Ready (Requires Subscription)	0	0	0	0	0
Sirius/XM Satellite Radio Ready (Requires Subscription)	S	S	S	S	S
USB & Auxiliary Inputs	S	S	S	S	S
Seat Belts - Three-Point Driver/Passenger w/Adjustable Straps	S	S	S	S	S
12V Accessory Ports	S	S	S	S	S
110-Volt AC Outlets	S	S	S	S	S
Automotive Style Dash w/Dual Monitors & Workstation	S	S	S	S	S
Center Dash Pullout Storage Bin	S	S	S	S	S

	34C	35K	36P	37F	37FP
Cab Lights	S	S	S	S	S
Generator On/Off Switch	S	S	S	S	S
Battery Booster Switch	S	S	S	S	S
Colored Fiberglass Engine Cover w/Snack Tray	S	S	S	S	S
Front Cab Floor Mats	S	S	S	S	S
Front Cab Fans	S	S	S	S	S
Auto Leveling Jacks Controls	S	S	S	S	S
Driver/Passenger Center Table	S	S	S	S	S
Aux Start Switch	S	S	S	S	S
Hide-A-Loft Drop Down Queen Bed w/24" TV	0	0	0	0	0
Sofa - Tri-fold	NA	NA	NA	S	S
Sofa - Expandable L-Sofa	0	0	NA	NA	NA
Sofa - Tri-fold w/Incliner & Facing Booth Dinette w/Credenza	NA	NA	S	NA	NA
Sofa - Expandable L-Sofa & Free-Standing Dinette w/Credenza	NA	NA	0	NA	NA
Sofa - Jack-knife	S	S	NA	NA	NA
Sofa - Theater Seating	0	0	NA	0	0
Booth Dinette w/Dream Dinette Table	S	S	S	S	S
Free Standing Dinette w/Credenza	0	0	0	0	0
Solid Surface Galley Top	S	S	S	S	S
Surf-X Tops Throughout (Excluding Galley)	S	S	S	S	S
Electric Fireplace	S	S	NA	S	S
Interior Flat Soft Touch Vinyl Ceiling	S	S	S	S	S
Vinyl Tile Flooring	S	S	S	S	S
Ozite Lined Cabinet Interiors	S	S	S	S	S
Cedar Lined Wardrobe Interiors Select Locations	S	S	S	S	S
Full Extension Drawer Guides w/Latches	S	S	S	S	S
Hidden Euro Hinges/Struts	S	S	S	S	S
Solid Wood Raised Panel Cabinet Doors	S	S	S	S	S
Galley Overhead Glass Inserts	S	S	S	S	S
Solid Wood Ceiling Treatment w/ Acrylic Inserts & LED Backlighting	S	S	S	S	S
Slideout Fascia - Interior Wood Color Coordinating	S	S	S	S	S
Solid Wood Window Valances w/Lambrequins	S	S	S	S	S
Manual Day/Night Roller Shades	S	S	S	S	S
Energy Efficient 3" LED Flush Mount Ceiling and Under Cabinet Reading Lights Throughout	S	S	S	S	S
Flush Floor Living Slideouts	S	S	S	NA	NA
Brushed Nickel Faucets/Fixtures/Hardware	S	S	S	S	S
Battery Disconnect	S	S	S	S	S
Interior Entry Grab Handle - Metal	S	S	S	S	S
Multiplex Electric Controls w/App Control	S	S	S	S	S
Entry Door Manual Roller Shade	S	S	S	S	S
Solid Surface Entry Steps w/Lighted Stepwell	S	S	S	S	S
Residential Refrigerator - SS French Door Style w/Icemaker - Samsung	S	S	S	S	S
Three-Burner Drop-In Range w/Oven	0	0	0	0	0
Two-Burner Electric Induction Cooktop	S	S	S	S	S
SS Over-the-Range Convection Microwave	S	S	S	S	S
Tile Backsplash	S	S	S	S	S
Deep Double Bowl Undermount SS Sink	S	S	S	S	S
Solid Surface Sink Covers	S	S	S	S	S
Residential Single Handle Faucet w/Pullout Sprayer	S	S	S	S	S
Adjustable Shelves	S	S	S	S	S
Power Ceiling Vent - Fantastic	S	S	S	S	S
Waste Basket	S	S	S	S	S
Manual Night Roller Shade	S	S	S	S	S
King Serenity Series Memory Foam Mattress	S	S	S	S	S
Bunk Beds (Multi-purpose Flip Bunk for Wardrobe & Seating w/Doors)	NA	NA	NA	S	S
Designer Bedspread, Headboard, Pillow Shams & Pillows	S	S	S	S	S
120V/USB Ports	S	S	S	S	S
Top-Mounted Porcelain Sink	NA	S	NA	NA	NA
Top-Mounted Stainless Steel Sink	NA	S	S	S	S
Pedestal Porcelain Sink	S	NA	NA	NA	NA
Single Handle Residential Faucet	S	S	S	S	S
Medicine Cabinetry w/Mirror	S	S	S	S	S
Fiberglass Surround Shower w/Glass Door	S	S	S	S	S
Shower Skylight	S	S	S	S	S

Product information, photography and illustrations included in this publication were as accurate as possible at the time of printing.

	34C	35K	36P	37F	37FP
Metal Shower Head w/Sliding Adjustable Bar, Soap Dish & Matching Single Valve Faucet	S	S	S	S	S
Porcelain VacuFlush Toilet	S	S	NA	S	S
Porcelain Standard Toilet	NA	NA	S	NA	NA
Power Ceiling Vent - Fantastic	S	S	S	S	S
40" Flat Screen LED TV (Living Area)	S	S	S	S	S
32" Flat Screen LED TV (Bedroom)	S	S	S	NA	NA
24" Flat Screen LED TV (Bedroom)	NA	NA	NA	S	S
24" Flat Screen LED TV (Bunk Area)	NA	NA	NA	S	S
24" Flat Screen LED TV (Hide-A-Loft Drop Down)	0	0	0	0	0
HDMI Video Distribution	S	S	S	S	S
Soundbar w/Blu-Ray Player	S	S	S	S	S
Exterior Entertainment Center w/40" LED TV, AM/FM/CD/DVD/BD, & Two Speakers	S	S	S	S	S
Technology Package w/Bluetooth Speaker Exterior Porch Light, Wifi Extender, Cell Booster, 160W Solar Panel, Upgraded Kenwood Radio, Kenwood Collision Avoidance Camera	0	0	0	0	0
Dual-Roof Mount Ducted 15,000-BTU A/C Units w/Chill Grill & Dual Heat Pump	S	S	S	S	S
34,000 BTU Furnace	S	S	S	NA	NA
30,000/20,000 BTU Furnace	NA	NA	NA	S	S
Service: 50-amp	S	S	S	S	S
Converter: 60 AMP Power Converter	S	S	S	S	S
Inverter: Single 2000W Pure Sine	S	S	S	S	S
Solar Prep	S	S	S	S	S
Multiplex Wiring Control System w/App Control	S	S	S	S	S
6V Aux Batteries (4)	S	S	S	S	S
Neutral Loss Protection	S	S	S	S	S
Generator: 5.5kW Onan	S	S	S	S	S
Generator: 7.0kW Onan	0	0	0	0	0
Auto Gen Start	S	S	S	S	S
Master Battery Disconnect Switch	S	S	S	S	S
Water Pump: 12V 3GPM High Capacity Shurflo Water Pump	S	S	S	NA	NA
Water Pump: 12V 5.3GPM High Capacity AquaJet Water Pump	NA	NA	NA	S	S
Water Purification System (Whole Coach)	S	S	S	S	S
Water Heater Bypass System	S	S	S	S	S
Exterior Shower	S	S	S	S	S
Cable TV/Satellite Hookup	S	S	S	S	S
Black Holding Tank Flush System - San-T-Flush	S	S	S	S	S
Single Location Monitor panel w/LPG, Touch Sensor Tank Monitoring and Battery Readouts	S	S	S	S	S
Fire Extinguisher, LP/CO & Smoke Detectors	S	S	S	S	S
Exterior GFCI Receptacle in Exterior Storage	S	S	S	S	S
Combo Washer/Dryer	0	0	NA	0	0
Stackable Washer/Dryer	NA	NA	S	NA	NA
Combo Washer/Dryer Prep	S	S	NA	S	S
50-AMP Shoreline Power Cord	S	S	S	S	S
Exterior Shower	S	S	S	S	S
Cable TV/Satellite Hookup	S	S	S	S	S
Black Holding Tank Flush System - San-T-Flush	S	S	S	S	S
Single Location Monitor Panel w/LPG, Touch Sensor Tank Monitoring & Battery Readouts	S	S	S	S	S
Fire Extinguisher, LP/CO and Smoke Detectors	S	S	S	S	S
Exterior GFCI Receptacle in Exterior Storage	S	S	S	S	S
Combo Washer/Dryer	0	0	NA	0	0
Stackable Washer/Dryer	NA	NA	S	NA	NA
Combo Washer/Dryer Prep	S	S	NA	S	S
50-AMP Shoreline Power Cord	S	S	S	S	S
Exterior Shower	S	S	S	S	S
Cable TV/Satellite Hookup	S	S	S	S	S
Black Holding Tank Flush System - San-T-Flush	S	S	S	S	S
Single Location Monitor Panel w/LPG, Touch Sensor Tank Monitoring and Battery Readouts	S	S	S	S	S
Fire Extinguisher, LP/CO and Smoke Detectors	S	S	S	S	S
Exterior GFCI Receptacle in Exterior Storage	0	0	NA	0	NA
Combo Washer/Dryer	NA	NA	S	NA	NA
Stackable Washer/Dryer	NA	NA	S	NA	NA
Combo Washer/Dryer Prep	S	S	NA	S	NA
50-AMP Shoreline Power Cord	S	S	S	S	S

**CSA standards may require substitution or deletion to achieve conformance

SOUTHWIND STANDARD FEATURES AND OPTIONS

RV OWNERCARE

Limited one-year/15,000-mile coach warranty and three-year/45,000-mile structural warranty, whichever occurs first, and it is fully transferable for the first 12 months. RV OWNERCARE is one of the RV industry's most comprehensive programs and includes systems, appliances, components and construction, with no deductible and no service charge.

Chassis Warranty provided by Ford®

YOUR LOCAL DEALER

LA MESA RECREATION

LaMesaRV.com
800-496-8778



OUR VERY OWN FLEETWOOD RV MOTORHOME SERVICE CENTERS

At Fleetwood RV, we strive to deliver peace-of-mind at every turn. Our devotion to customer service starts with our trusted dealer network and spans to our own staff of motorhome service professionals at REV Recreation Group's regional technical centers. The motorhome service centers are strategically located throughout the United States to provide you convenient service wherever the road takes you.

Below, you'll find the closest motorhome service center, as well as a list of the other centers. Please visit www.fleetwoodrv.com/motorhome-service-centers to schedule a Service Appointment.

East Coast REV Technical Center
800-509-3417

West Coast REV Technical Center
877-466-6226

ROADSIDE ASSISTANCE. ANYWHERE. ANYTIME.



24/7 CUSTOMER SUPPORT FOR:

- FUEL
- BATTERY
- LOCKSMITH
- TOWING
- SLIDE-OUT ISSUES
- AND MUCH MORE!

1-855-268-0414

REV GROUP

Fleetwood RV is part of REV Recreation Group, a division of REV Group, Inc., a family of 33 industry-leading motor vehicle brands. At REV Group, we innovate, design and build products that connect and protect thousands of people every day—our trusted vehicles are engineered with the utmost rigor and precision to deliver the highest levels of performance, reliability, durability and safety.

DISCLAIMERS

1. GVWR (Gross Vehicle Weight Rating) is the maximum permissible weight of this fully loaded motor home. The GVWR is equal to or greater than the sum of the (UVW) unloaded vehicle weight plus the (OCCC) occupant cargo-carrying capacity.

2. GAWR (Gross Axle Weight Rating) is the maximum permissible loaded weight a specific axle is designed to carry.

3. GCWR (Gross Combined Weight Rating) is the value specified by the motor home manufacturer as the maximum allowable loaded weight of this motor home with its towed vehicle. Towing and braking capacities may be different. Refer to Fleetwood and chassis manufacturer's manuals for complete information.

4. Length measured from front bumper to rear bumper (excludes accessories).

5. Excludes safety equipment and awnings.

6. Motor homes feature a body width over 96" which will restrict your access to certain roads. Before purchasing, you should research any state and/or province road laws which may affect your usage.

7. Tank manufacturer's listed water capacity (WC). Actual propane capacity is 80% of water listing as required by the safety code.

† The chassis manufacturer recommends the installation of a supplemental brake control system to activate the brakes on the vehicle or trailer you are towing. Hitch receiver ratings expressed are maximum for the hitch receiver installed and may require the purchase of additional equipment that is dependent on the weight of the towed load. Consult with hitch receiver manufacturer for further information.

* UVW and OCCC are found on the label containing the federal certification tag in each RV.

** Seatbelts and locations are shown in the brochure for display purposes only. Actual numbers and locations will vary by model.

*** All 2019 REV Recreation Group motorhomes include a limited one year/15,000-mile coach warranty and three-year/45,000-mile structural warranty, whichever occurs first, and is fully transferable for the first 12 months.

FLEETWOOD MOTORHOME ASSOCIATION

As a Fleetwood RV owner, you're invited to become a member of the Fleetwood Motorhome Association (FMA). Becoming a member is the perfect way to meet other Fleetwood owners who love to travel across America and share in the RV lifestyle. Visit the FMA website at www.fma4fun.org to learn more and join the fun.

CONTACT US

To locate a dealer near you, visit our website at www.fleetwoodrv.com or call 1-800-322-8216. We can also be contacted at Fleetwood RV Customer Relations, P.O. Box 1007, Decatur, IN 46733.

IMPORTANT—PLEASE READ: Product information, photography and illustrations included in this publication were as accurate as possible at the time of printing. For further product information and changes, please visit our website at www.fleetwoodrv.com or contact your local Fleetwood RV dealer. Prices, materials, design and specifications are subject to change without notice. All weights, fuel, liquid capacities and dimensions are approximate. Fleetwood RV has designed its recreational vehicles to provide a variety of uses for its customers. Each vehicle features optimal seating, sleeping, storage and fluid capacities. The user is responsible for selecting the proper combination of loads (i.e., occupants, equipment, fluids, cargo, etc.) to ensure that the vehicle's capacities are not exceeded.

www.fleetwoodrv.com

©2018 REV Group, Inc. Printed in the USA, 10/18. Model Year 2019, First Edition.